



CAC Update

Sept. 18, 2018

Randy Lockwood
Senior VP
Pickering Nuclear





Water Intake Overview

Lake water coming into the station passes the following barriers prior to entering our Condenser Cooling Water and Service Water Systems:

- Fish Diversion System (FDS)
- Bar Screens
- Travelling Screens
- Additional system-specific filtration systems

Water Intake Overview



Fish Diversion System (FDS)



FDS Summer Deployment



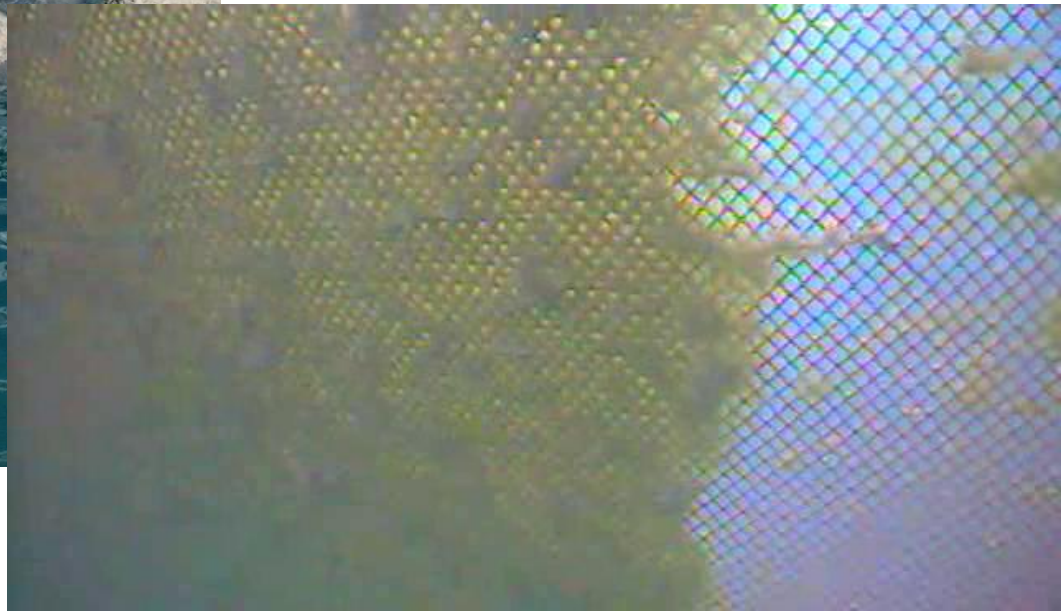
Screenhouse - Layout



Dive Team



Algae



Harvester



Algae Conditions

